

# THE MARKET AT GRELEN



## SELF-GUIDED WALKING TOUR



We are honored that you have thought of our venue for your special day! The walking segment of the tour begins on page 8. Please take a moment to read the first few pages to better understand the history and daily operations of our beautiful properties!

Our events staff is eager to chat with you about any questions you may have after viewing the property. Please leave your name and contact information with our front desk staff so we can be in touch! If you have not already, please submit an inquiry on our website ([Eventsatgrelen.com](http://Eventsatgrelen.com)) or leave your name and contact information with our front desk staff so we can be in touch!

[WWW.EVENTSATGRELEN.COM](http://WWW.EVENTSATGRELEN.COM)

# HISTORY & BACKGROUND


## A VIRGINIA WEDDING VENUE FOR DESTINATION, ELOPEMENT & GARDEN WEDDINGS

Set on Grelen Nursery's 1000-acre tree nursery, The Market at Grelen is a magical wedding venue boasting rural simplicity at it's most luxurious! It has gorgeous 360-degree views and was lovingly designed to emphasize the surrounding natural beauty.

Grelen Nursery was established in 1990 and offers large plant material and landscaping. The Market at Grelen was founded by the same owners in 2013. It includes the European-Style Garden Shop, the Casual Cafe, Hiking Trails, a PYO Farm and the Wedding & Event Venue. The Market at Grelen also manages Grelen Downtown, a Retail shop on Main Street in Orange, the Grelen Depot, Grelen Online, as well as Boxwood Villa & Spotswood Lodge, which are private homes used for lodging and events.

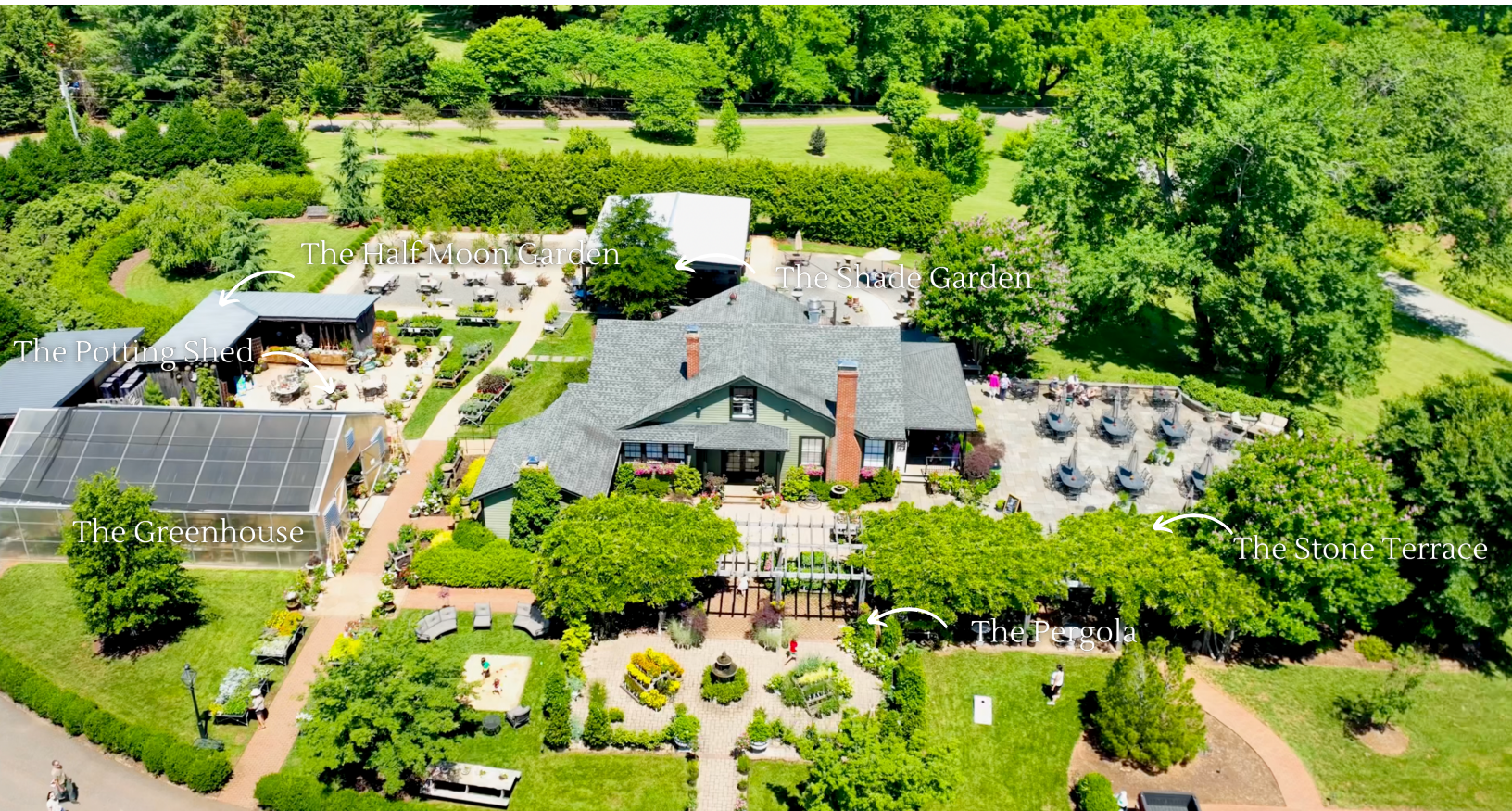
Located in Central Virginia between the small Towns of Orange & Gordonsville, Grelen is only 35 minutes north of Charlottesville, one hour west of Richmond and two hours south of DC.





# THE PROPERTY

[WWW.EVENTSATGRELEN.COM](http://WWW.EVENTSATGRELEN.COM)



**START YOUR TOUR AT THE PERGOLA IN FRONT OF THE SHOP!**

WWW.EVENTSATGRELEN.COM



VENUE SPACES

# THE PERGOLA

Draped in twinkle lights and blooming wisteria in the spring, the Pergola is the perfect place for couples to steal away for an emotional first look or romantic portrait. The pergola is located next to the Stone Terrace and can be used for photographs beginning at 4pm. It is a wonderful spot for an intimate cocktail hour and as an extension to the stone terrace for cocktail hour.



# THE STONE TERRACE

The stone terrace has a view of the Blue Ridge Mountains and is a great spot for cocktail hour, especially for larger weddings. Guests are able to use all of the iron furniture and bars can be setup in a variety of locations. If you have cocktails on the terrace and/or under the pergola, Grelen provides you with four barrel bars which is included in your venue fee. Your caterers will expected to move them into place.



# THE SHADE GARDEN

This is a wonderful spot for cocktail hour (especially in the case of hot weather) but if not used for this specific purpose, guests are allowed to wander throughout the space, cocktail in hand! This space can also be used for a ceremony in the case of light rain or extreme heat instead of the greenhouse.



# THE HALF MOON GARDEN

With a gorgeous weeping cherry tree standing in the center of the garden, The Half Moon Garden is an unforgettable place for an intimate ceremony of 175 guests or less. This space can also be used for Cocktail Hour or Photos. The pebbled walkways and stone furniture arranged throughout can be used by guests.



# THE POTTING SHED

The Potting Shed's twinkle lights mirror the Greenhouse lights and create an amazing ambiance at night. Along with the adjacent courtyard, this area is works well for cocktail hour or portrait photo opportunities.



# THE GREENHOUSE

In case of inclement weather, The Greenhouse provides an authentic garden experience and is perfect for an indoor Ceremony for up to 130. It can also be used for a Cocktail Hour for up to 60 or a seated Rehearsal Dinner for up to 40. The side wall can be opened up to the neighboring Potting Shed to help maintain temperature as well as invite in a slight breeze. The plants and tables along the edges of the space remain in place and cannot be moved.



**CONSIDER THE  
GREENHOUSE  
FOR REHEARSAL  
DINNERS!**





# THE BERRY LAWN



Directly next to the Orchard Overlook Tent, The Berry Lawn boasts expansive pastoral views of the surrounding mountains and lush Nursery. Framed by two oak trees, this is Grelen's most popular ceremony site and accommodates up to 250 guests. Add cocktail tables, fire pits or lawn games during the reception to add some flare to the whole affair.



# THE ORCHARD OVERLOOK TENT



With the look of a glass conservatory, The Orchard Overlook Tent is a 4500' sq. ft. clear top tent placed on a beautiful bluestone floor with clear, retractable side walls. The clear top tent gives the space a magical quality that is sure to please. The bluestone flooring also extends beyond the tent, creating a 1350 sq. ft. outdoor patio with 180 degree views of the Nursery. During the hot months of July and August, the top of the tent is switched to an opaque white top to help keep the inside cool. The small white tent in the parking lot next to the main tent is for caterers and other vendors to use for the event.



# BLOOMFIELD



For those seeking a breathtaking vista, Bloomfield, at one of the highest points of the nursery, presents a one-of-a-kind experience. With panoramic views of the majestic Blue Ridge Mountains and the sweeping valley of the nursery, you and your guests will be captivated by the stunning natural backdrop that unfolds before your eyes. This unique ceremony space at Grelen allows you to tailor your celebration to match your vision. Please note that this venue space is an additional \$500 fee and all rentals used in this location are extra.



# THE LOVE LAWN



NEW! The Love Lawn is a new ceremony offering and is located behind the OverLook Tent to the left (closer to The Love Sign). The view and lawn are expansive and we are adding landscaping to hide the catering tent & shed and to make the back of the patio stone wall prettier. Walk around this area and see if this space speaks to you! Wide open with those gorgeous Nursery views, it's another great option.



# MAGNOLIA COTTAGE SUITES

Located across from the Nursery Office, Grelen's new "Magnolia Cottage" is a wonderful upgrade and houses two private suites. The luxurious upper level suite boasts a beauty bar (for 5), a kitchenette and a powder room. The lower level serves as a comfortable getting ready suite and has a separate side entrance. It includes a large lounge area and full bathroom. Although some couples choose to get ready and have photos off-site at Spotswood Lodge or Boxwood Villa, these large spaces are perfect for getting dressed and/or relaxing before the ceremony. Cafe food and beverages can be pre-ordered for delivery to either suite.



*Please note: The Market at Grelen Venue fee includes complimentary use of these suites from 10a-6p on your wedding day - additional hours can be added for \$250/hour. Only wedding party guests are allowed in the suites as they are not designed to be "pre-party" rooms for general wedding guests or family. Outside alcohol is not permitted due to ABC laws.*

# THE TYPICAL TIMELINE



# CEREMONY



# COCKTAIL HOUR



# RECEPTION







# INCLUDED IN VENUE FEE



- Use of Property after hours for engagement photos
- Use of Property for event from 4pm-11pm (Sun. 10pm)
- Use of all Venue Spaces as described
- Use of Orchard Overlook Tent
- Orchard Overlook Tent bistro & chandelier lighting
- Use of Greenhouse (in the case of rain)
- Wedding Suites (10a-6p access on Wedding Day)
- 15-20 Green Plants for decorating venue spaces
- Use of lounge seating and Adirondack chairs
- Restrooms for up to 250 guests
- Handicap restroom access
- 17 6 ft. round tables, 175 crossback & bamboo garden chairs
- One 8ft banquet table & One 6ft banquet table
- Four complete Wine Barrel Bars
- Sunset Kubota ride on wedding day (optional)
- Plenty of power and parking
- Onsite planning meeting with venue team one month before event
- SEE PRICING & FAQs PAGE FOR MORE DETAILS!

[WWW.EVENTSATGRELEN.COM](http://WWW.EVENTSATGRELEN.COM)

INCLUDED IN VENUE FEE



Bamboo Garden Chair -  
NEW!  
*An organic chair for your  
ceremony or reception!*



Crossback Garden Chair -  
NEW!  
*A classic for your ceremony or  
reception!*



# RAIN PLAN...



Grelen Couples must have a rain plan. Options for ceremony and cocktail hour include...

- Greenhouse Ceremony (<130 people)
- Greenhouse Cocktail Hour (<60)
- Shade Garden Ceremony (<150)
- Shade Garden Cocktail Hour (<80)
- Orchard Overlook Tent (most comfortable <200 people)
- For an extra rental fee a tent and/or marquee can be placed in certain areas of the property (this requires approval by the Grelen Events team)

## IMPORTANT INFORMATION

- Guests can begin to arrive as early as 4:00 pm & ceremonies cannot begin before 4:30pm.
- Set up can begin in The Orchard Overlook Tent at noon the day of your event. Set up in all other areas around the Market can begin at 3:30 pm.
- It is required that you hire a wedding planner and a full service caterer to get married at Grelen. These vendors must be chosen from Grelen's preferred list. You can choose a full-service planners, a 30-90 day planner or a day-of planner. A full service caterer means that they are responsible for the entire service, set up and clean up.
- You can use 15-20 Grelen plants to decorate, they do not replace a florist. You will still need a florist for your bouquets and reception centerpieces. Grelen plants cannot be used as centerpieces.
- There is limited wifi so access is only given to the bride, groom and lead vendors.
- It is a requirement that Grelen Couples provide bus or shuttle transportation for guests.



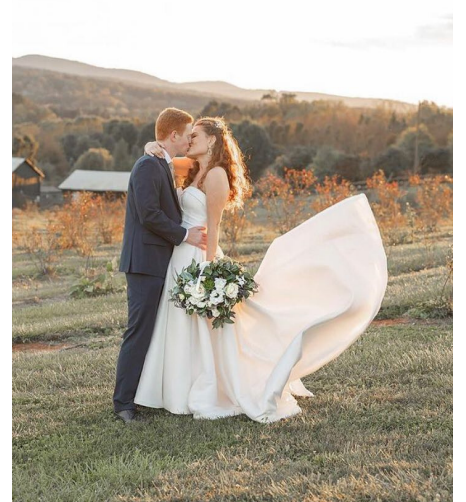
# PORTRAIT LOCATIONS



# GRELEN'S GOLDEN HOUR



One of the greatest perks of getting married at Grelen is all the amazing locations for Gold Hour photos. At the client's request, one of our event staff members can take the couple and the photographer up to one of the higher points on the property, such as Bloomfield. On your wedding day, we recommend heading out into the sunset for 15-20 minutes to get some intimate "just married" photos in the golden light!



# ADDED VALUE

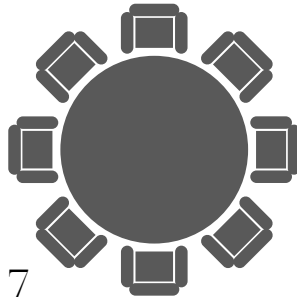
*Cost of Rentals Included in the Venue Fee*



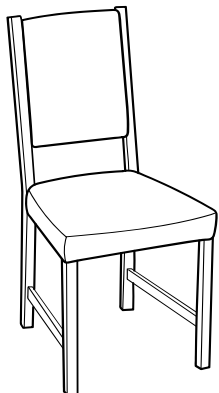
4 Barrel Bars  
\$500



Lighting  
\$5000



17  
6' Round Tables  
\$220



Chairs  
(3 options)  
\$4000



Patio & Lounge  
Furniture surrounding  
The Market  
\$\$ - PRICELESS

Garden Shop  
Plants  
\$\$ - PRICELESS



Luxury  
Restroom Trailers  
\$3000

TOTAL VALUE (APPROX)  
\$15000+



# OTHER GRELEN VENUE OPTIONS

For Lodging, Getting Ready, Rehearsal Dinners & other Events





Located just outside the town of Orange, Virginia, Boxwood Villa is approximately 10 minutes from The Market. The founders of Grelen Nursery & The Market at Grelen renovated this lovely 1891 property to add to their event & lodging options for their Market at Grelen guests and area visitors. In good shape structurally, this gem is set on 13.6 beautiful acres and boasts modern amenities and a .5 walking trail. Named for its large boxwood circling the house, Boxwood Villa is surprisingly private given that it's within walking distance to town.

It sleeps up to 10 and can host events up to 200 for weddings & events.

[www.boxwoodvilla.com](http://www.boxwoodvilla.com)



BOXWOOD VILLA

# SPOTSWOOD LODGE



Spotswood Lodge is located in beautiful Somerset, VA near Gordonsville, VA and approximately 10 minutes from The Market. It is an 11-acre farm house & cottage rental. Operated by The Market at Grelen, it is open to couples who are getting married at Grelen or any other amazing venue in the area. With eight bedrooms and seven full baths Spotswood is a wonderful option for wedding parties and/or families of the bride and groom. It sleeps up to 20 and can host events up to 75 guests.

[www.spotswoodlodge.com](http://www.spotswoodlodge.com)

# WEDDING WEEKEND

BOXWOOD VILLA AND SPOTSWOOD LODGE ARE PERFECT FOR GETTING READY, FIRST LOOK & PRE-WEDDING PORTRAITS!






The Depot is located on Main Street in Downtown Orange, VA (15 minutes from The Market). It is a beautiful building which we are thoughtfully renovating with historic preservation, art and beauty in mind. Our goal is to restore this classic old world building with creativity and charm adding to the character of Orange's adorable Main Street. The ultimate vision is to glamorize the exterior while creating a variety of elegant indoor venue spaces that are contemporary yet warm with a bit of European flair. The Depot has three distinct one-of-a-kind event spaces (called The Lounge, The Gallery, and The Loft) and is perfect for events with guests counts of 70 or less (think rehearsal dinners, small weddings, birthday/graduation parties). With an on-site catering kitchen and a separate prep space, the building is designed not only to be beautiful, but practical for vendors. The 118 Luxury Suite is upstairs and perfect for a couple's wedding night.

[www.grelendepot.com](http://www.grelendepot.com)

# LET'S TALK!

A woman with blonde hair, wearing a long, flowing pink dress with a large floral pattern, stands in a lush green orchard. She is holding a large bouquet of white flowers. The orchard rows are filled with trees bearing small, round, reddish-orange fruit. The background is a soft-focus view of the orchard stretching into the distance under a bright sky.

QUESTIONS? Whether you need a virtual tour, a phone call, or a chance to walk the grounds with a venue manager on a different day, we are here to help! Please fill out an inquiry, review pricing & see more photos on our [www.eventsatgrelen.com](http://www.eventsatgrelen.com) website and/or email Grelen's events team directly at [grelenevents@gmail.com](mailto:grelenevents@gmail.com).